

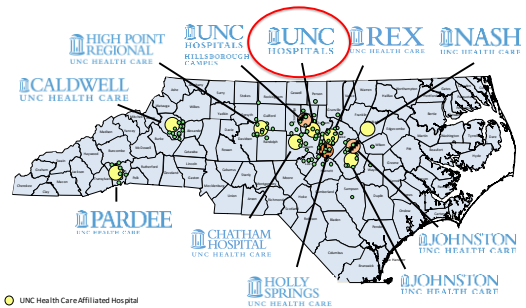


Health-System Overview



UNC Health Care

- Composed of 8 hospitals across the state of North Carolina
 - UNC Medical Center (main campus, Chapel Hill, NC)
 - UNC Hillsborough Campus
 - Rex Healthcare
 - Chatham Hospital
 - High Point Regional Health
 - Caldwell Memorial
 - Pardee Hospital
- UNC Physician's Network – provides clinic based services to all 100 counties in North Carolina



UNC Medical Center

- Public Academic Medical Center includes:
 - NC Cancer Hospital
 - NC Children's Hospital
 - NC Memorial Hospital
 - NC Neurosciences Hospital
 - NC Women's Hospital
- 803 inpatient beds (92 ICU)
- >37,000 discharges annually
- >1.3 million clinic visits per year



Distinguishing Characteristics

- Level 1 Trauma Center
- Largest regional Burn center (NC Jaycee Burn Center)
- NCI Designated Comprehensive Cancer Center
- American Heart Association Lifetime Gold Status
- Regional Hemophilia Center
- JCAHO-designated comprehensive stroke center



UNC Medical Center Department of Pharmacy

- Director: Rowell Daniels, PharmD, MS
- 363 FTEs (402 employees)
 - 120 pharmacists FTE
 - 136 technicians FTE
 - 74 administrative staff FTE
 - 33 pharmacy residents FTE
- Decentralized, service-line based model of pharmacy practice
- Fully automated distribution system
- EPIC implemented in April 2014



Partnership in Patient Care



- Joint Collaborative between UNC Hospitals and the UNC Eshelman School of Pharmacy
 - UNC Chancellor
 - UNC Health Care CEO
 - UNC ESOP Dean
 - UNC Hospitals Director of Pharmacy
- Mutually beneficial relationship that complements each individual organization's mission
- Exists to support the patient care, teaching, and research efforts of both organizations
- Develop a 'one pharmacy community' mindset.



Residency Program Overview



History of Residency Training

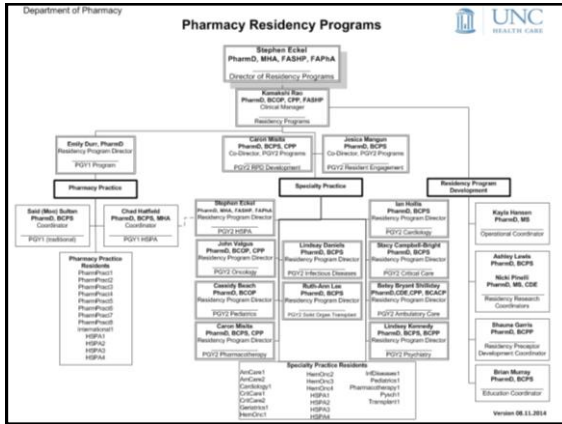
- Postgraduate training programs started at UNC Hospitals in 1967, with 2 residents
- Since then, the program has grown to its current size, incorporating 33 residents in 13 distinct training programs



Residency Programs Offered

- | | |
|---|--|
| <p><u>PGY2 Specialty Practice</u></p> <ul style="list-style-type: none"> • Ambulatory Care • Cardiology • Critical Care • Health-System Medication-Use Management • Hematology/Oncology • Infectious Diseases • Pediatrics • Psychiatry • Solid Organ Transplant | <p><u>Combined PGY1/PGY2</u></p> <ul style="list-style-type: none"> • PGY1/PGY2/MS Administration • PGY1/PGY2 Pharmacotherapy <p><u>PGY1 Pharmacy Practice</u></p> <ul style="list-style-type: none"> • Pharmacy Practice • Pharmacy Practice (International) • Ambulatory Care |
|---|--|






UNC Pharmacy Training Programs

Clinical Practice

- More than 60 active preceptors
- Active participation on nearly all medical, surgical, and subspecialty services hospital-wide
- Robust ambulatory care programs with >23 CPP-licensed preceptors
- Extensive experiences with clinical management preceptors



Locations of CPP Pharmacists

- Endocrine – Highgate (near South Pointe)
- Anesthesiology / Pain Management – Southern Village
- Family Medicine – Manning Drive
- Carolina Advanced Health (Family Medicine) – Quadrangle
- Internal Medicine – Ambulatory Care Center
- Geriatrics – Carolina Pointe
- Cardiology – Meadowmont
- Infectious Diseases / HIV – Main Hospital
- Solid Organ Transplant – Main Hospital
- Palliative Care – Cancer Hospital / Carolina Pointe
- Bone Marrow Transplant – Cancer Hospital
- Malignant hematology – Cancer Hospital
- Solid tumors – Cancer Hospital
- Rheumatology – Carolina Pointe
- Hepatology – Main Hospital
- Neurology – Prestwick Place
- Carolina Assessment of Medications Program – Main Hospital
- Psychiatry – Main Hospital


33 Total
22 in existence
11 In Progress



UNC Pharmacy Training Programs

Clinical On-Call

- Off site Clinical On-Call program
 - 24-hour on-call coverage once a month
 - Respond to rapid strep, enterococcus and candida test results
 - Start appropriate antimicrobial coverage
 - Any additional clinical questions overnight



UNC Pharmacy Training Programs

Research & Leadership

- Residents all complete a longitudinal research project
 - Flipped research model for PGY-1 practice residents
- Publication requirement
 - All residents are required to submit an article, etc, for consideration for publication
- Leadership certificate
 - Individual and group-based activities focused on developing residents as leaders



UNC Pharmacy Training Programs

Clinical Education

- Education and teaching is at the core of the experiences for resident learners
- >35 students complete PY4 rotations at UNC Hospitals, allowing residents opportunity to precept
- Participation in group-based teaching sessions
- Serve as TA's at UNC Eshelman School of Pharmacy
- Competitive teaching certificate program administered through UNC Eshelman School of Pharmacy



UNC Pharmacy Training Programs *Training Environment*

- Mentorship
 - Individual (longitudinal)
 - Research
 - Teaching
- Collegiality / Family
 - Residents are encouraged to participate in group bonding activities and weekends to foster professional and personal networking



5 National Best Practices Awards

- **2015** - Impact of an Integrated, Closed-Loop, Pharmacy-Led Oral Chemotherapy Program on Clinical and Financial Outcomes
- **2014** - Advancing Pharmacy Practice Through an Innovative Ambulatory Care Transitions Program
- **2013** - Advancing into Uncharted Territory: Impact of an Innovative Factor Stewardship Program on Drug Expense, Patient Care, and a Pharmacist's Role
- **2012** - Maximizing the Impact of Pharmacists Across Transitions of Care: Hematopoietic Cell Transplant as a Best Practice Opportunity for Clinical Pharmacists
- **2011** - Development, Implementation, and Impact of a Comprehensive, Medical Service Based Pharmacy Practice Model that Maximizes Pharmacist Involvement in the Patient Care Setting



Resident Bonding

- Ropes Course



- Bonding Weekend
 - Cookout
 - Scavenger Hunt



Where are they Now?

- Residents graduating from UNC Pharmacy Training programs now work across the country and around the world
 - Majority are working in the clinical or academic setting
 - >85% are actively involved in teaching, either as a clinical preceptor or residency program director
 - Many are involved at the local, state, national, and international level in clinical pharmacy practice and leadership



UNC
HEALTH CARE

*Pharmacy Residency
Programs*