

# Simulation Technology Reference

**SimPad**  
Laerdal



**UNC Healthcare**  
**Advanced Life Support Programs**  
Version 1 Dated 5 June 2013

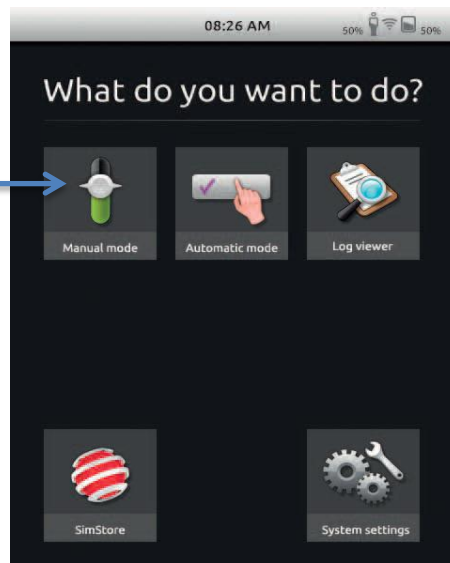
# SimPad

Laerdal

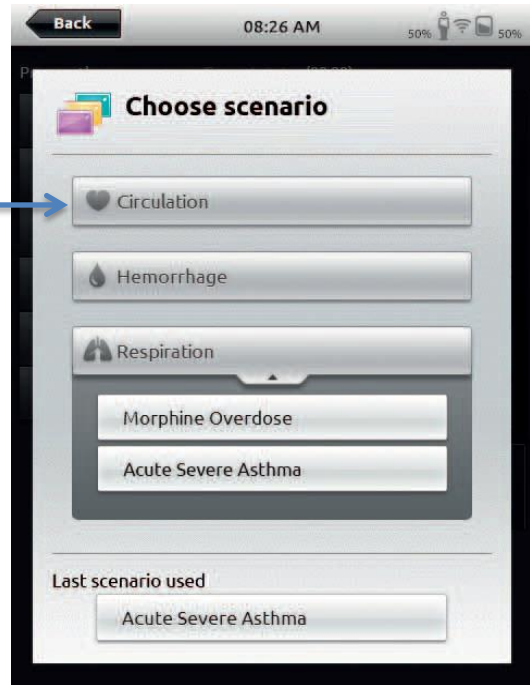
To turn **ON**, press and hold the power button on top of unit. Users may also put unit to sleep or on standby by depressing power button once until screen darkens. To turn **OFF**, press and hold power button and select option “**Shut down SimPad and Link Box**”.



Users may begin any teaching simulation session by selecting **Manual Mode** on the main touch screen

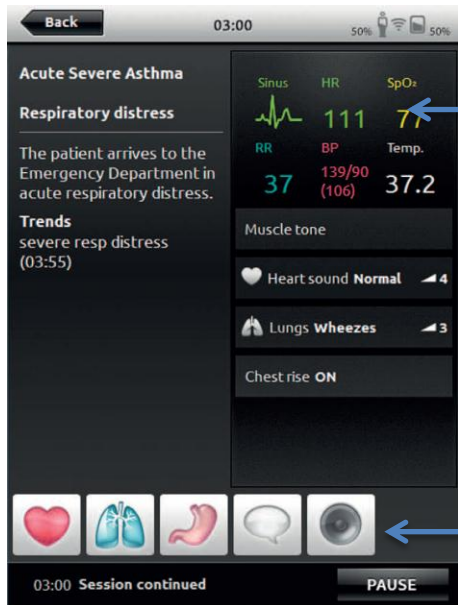


Choose a scenario based on current course title, objectives or purpose (i.e. ACLS, PALS, ECG or Odyssey). Each light gray box is a separate folder containing various options. *Note: **Circulation** will provide basic rhythm interpretation and is used in the Technology Review station.*



If needed users may name or re-name your session. Routinely the default session name will remain the same. Ensure the name matches the intended scenario

Press **OK** when ready to begin session



This area provides access to vital sign adjustment. Users may touch on any of the 6 diagnostic/monitoring topics and make adjustments. Adjustments here are temporary and the device will default to normal upon exit.

This lower area allows adjustment of the realistic effects of the manikin (i.e. voice, breath sounds, bowel sounds and pulse rate). These effects are pre-programmed with each scenario, but may be adjusted by the user to enhance the simulation experience.